



Umfuli, Powyke Court – WR2 4SZ

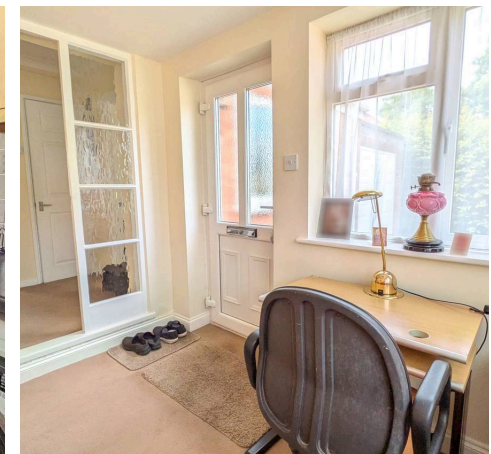
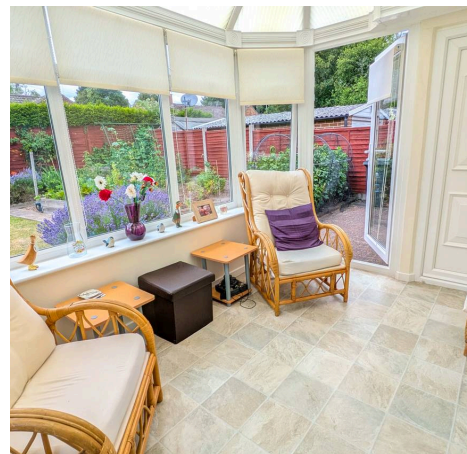
Offers in Region of **£325,000**

Umfuli

Powyke Court, Worcester

This well-presented two bedroom detached bungalow is situated within a sizeable plot whilst offering excellent access to both Worcester and Malvern with bus stops just a short walk away. The property features an entrance hall that may also be used as an office space, hallway, a good size sitting room that leads to a conservatory further accessing the attached garage. A kitchen as well as utility room, two double bedrooms and a bathroom. The property's position gives it a sense of privacy and space, a viewing is highly advised to appreciate the bungalow.

- Detached Bungalow
- Two Double Bedrooms
- Sizeable Plot With Gardens Surrounding The Property
- Conservatory & Utility
- Great Access To Worcester & Malvern
- Driveway & Garage





Ground Floor

