



15 Christine Avenue, Rushwick – WR2 5SW

Offers in Region of £425,000

15 Christine Avenue

Rushwick, Worcester

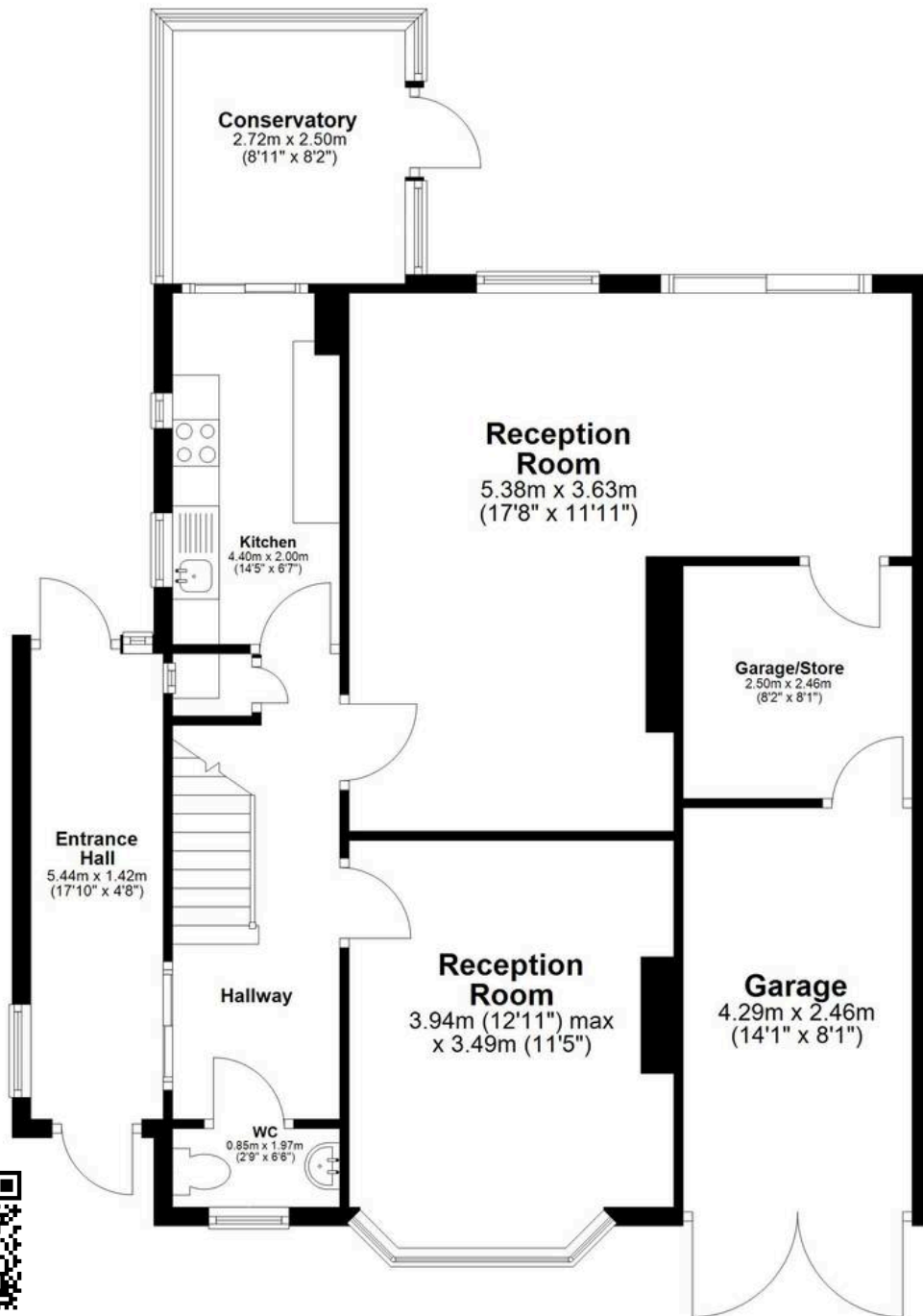
Set within the sought after village of Rushwick on Christine Avenue is this four bedroom family home. The property has been extended allowing for sizeable and versatile ground floor accommodation. The property comprises entrance hall, hallway, reception room, additional large rear reception room, kitchen, conservatory, cloakroom and garage. To the first floor are four bedrooms and a family bathroom. The home also benefits from boarded attic space with loft ladder, a large driveway and pleasant rear garden. A viewing is highly recommended to appreciate it's plot as well as property and the potential it offers with scope for improvement for any buyer to put their own stamp on this village home.

- Large Detached Family Home
- Scope For Improvement
- Sought After Village Location
- Four Bedrooms
- Large Ground Floor Accommodation
- Driveway, Garage & Pleasant Rear Garden
- Ground Floor Cloakroom





Ground Floor



First Floor

