



91 Ambleside Drive, Worcester – WR4 9BY  
£325,000

**HILLS**  
Estate Agents

## 91 Ambleside Drive

Worcester, Worcester

This three bedroom detached family home offers an excellent opportunity for families or those seeking a spacious home with plenty of scope and potential. The property features a welcoming entrance hall leading to a kitchen and a generously sized sitting room/diner and a WC. To the first floor are three bedrooms with bedroom one being of a particularly large size. The property also boasts a driveway, carport and a garage, offering convenient off-road parking and additional storage options. There is also a large and pleasant rear garden as well as lawned foregarden. With local amenities nearby and good access to Worcester city centre this home is offered to the market with no onward chain and must be viewed to appreciate its plot and its potential.

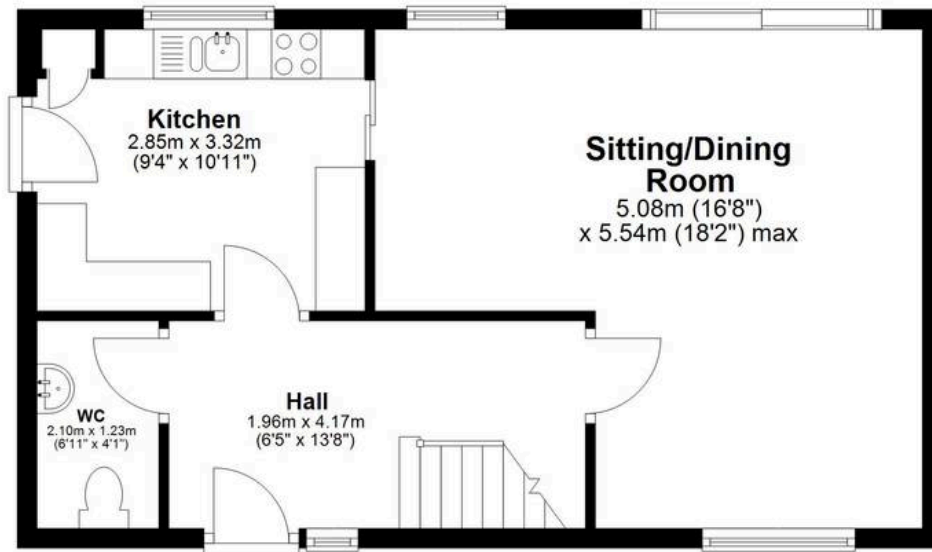
Council Tax band: C

- Detached family home
- Three bedrooms
- Large pleasant and private garden
- Driveway & garage
- No onward chain





### Ground Floor



### First Floor

