



Earlsdon Road, Worcester – WR2 4PF  
£450,000

**HILLS**  
Estate Agents

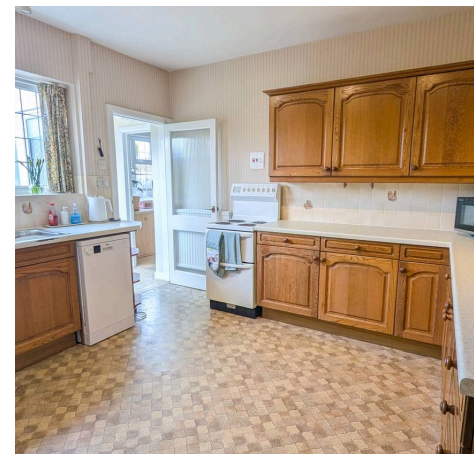
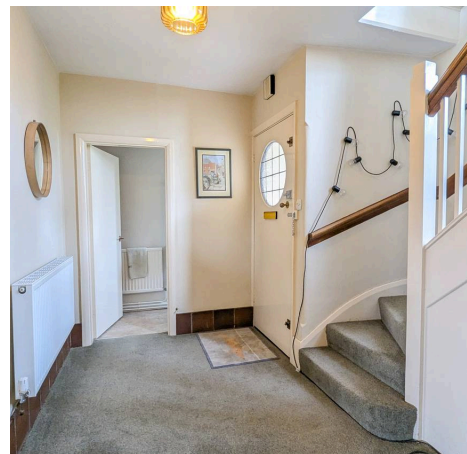


## 3 Earlsdon Road

Worcester, Worcester

Situated in a highly sought after location is this three bedroom semi-detached family home. The property offers convenient access to local amenities and popular reputable schools. This impressive home features a spacious layout, including two reception rooms that provide ample space for both entertaining and family living, there is also a sizeable kitchen, large study and ground floor WC. To the first floor are three well-proportioned bedrooms and a shower room. Additional benefits include a large driveway and an integral garage and large front and rear gardens complimenting the property. A viewing is highly advised to appreciate this lovely family home.

- Semi-Detached Home
- Sought After Location
- Three Bedrooms
- Two Reception Rooms
- Large Garden
- Close To Local Amenities & Popular Schools
- Driveway & Garage

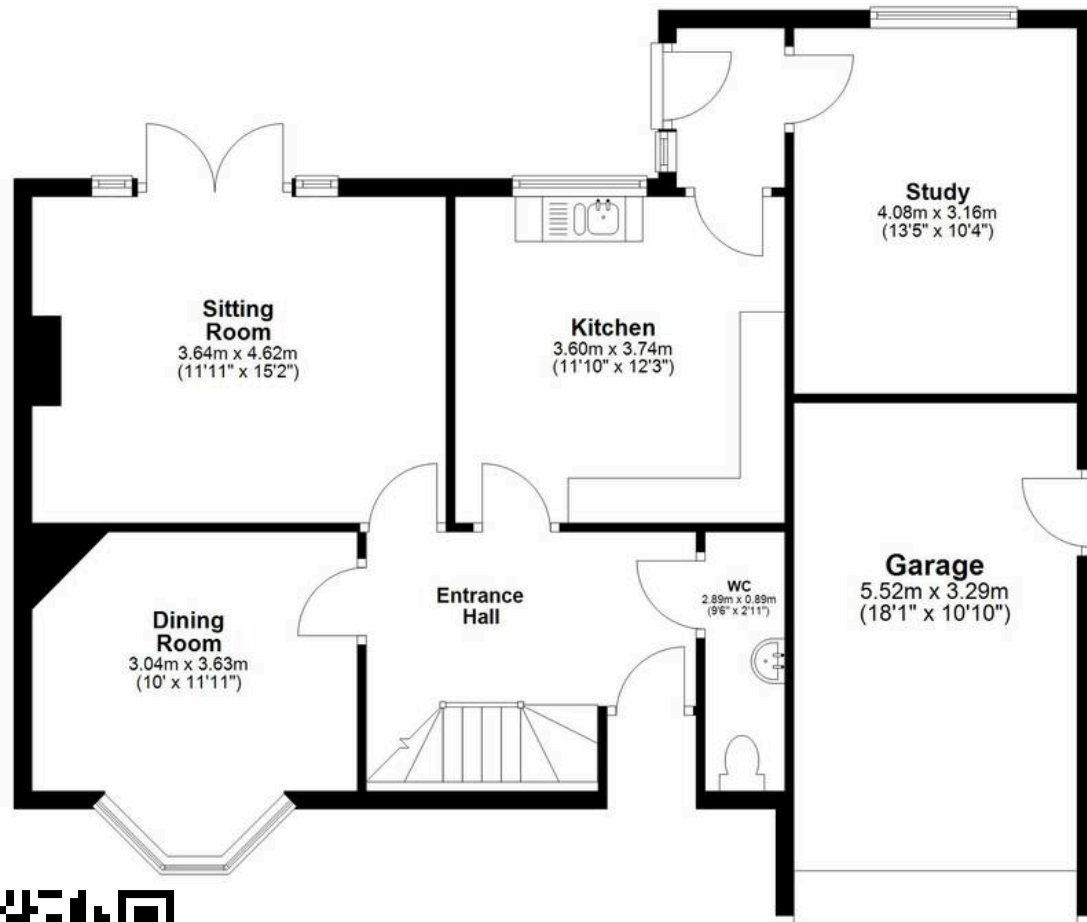








## Ground Floor



## First Floor

