



Gatepiece Cottage Kings Green, Wichenford – WR6 6YG  
£875,000

**HILLS**  
Estate Agents



# Gatepiece Cottage Kings Green

Wichenford, Worcester

This impressive four bedroom detached home offers a rare opportunity to acquire a truly unique and characterful cottage with generous and versatile accommodation, set in a tranquil rural location with sweeping views over open countryside. The home features four generously sized double bedrooms, providing ample space for family living or visiting guests. The property includes two substantial garage/workshops (ideal for storage, hobbies, or other uses) further enhancing its appeal to those seeking additional space. Throughout, period features blend seamlessly with modern comforts, creating an inviting and practical home environment. Extensive gardens surround the property which must be seen to be appreciated. An early viewing is highly recommended to fully appreciate the idyllic lifestyle this property offers. Council Tax band: E

EPC Energy Efficiency Rating: F

- Detached character property
- Two garage/workshops
- Four double bedrooms
- Circa 2 acres
- Views over open countryside

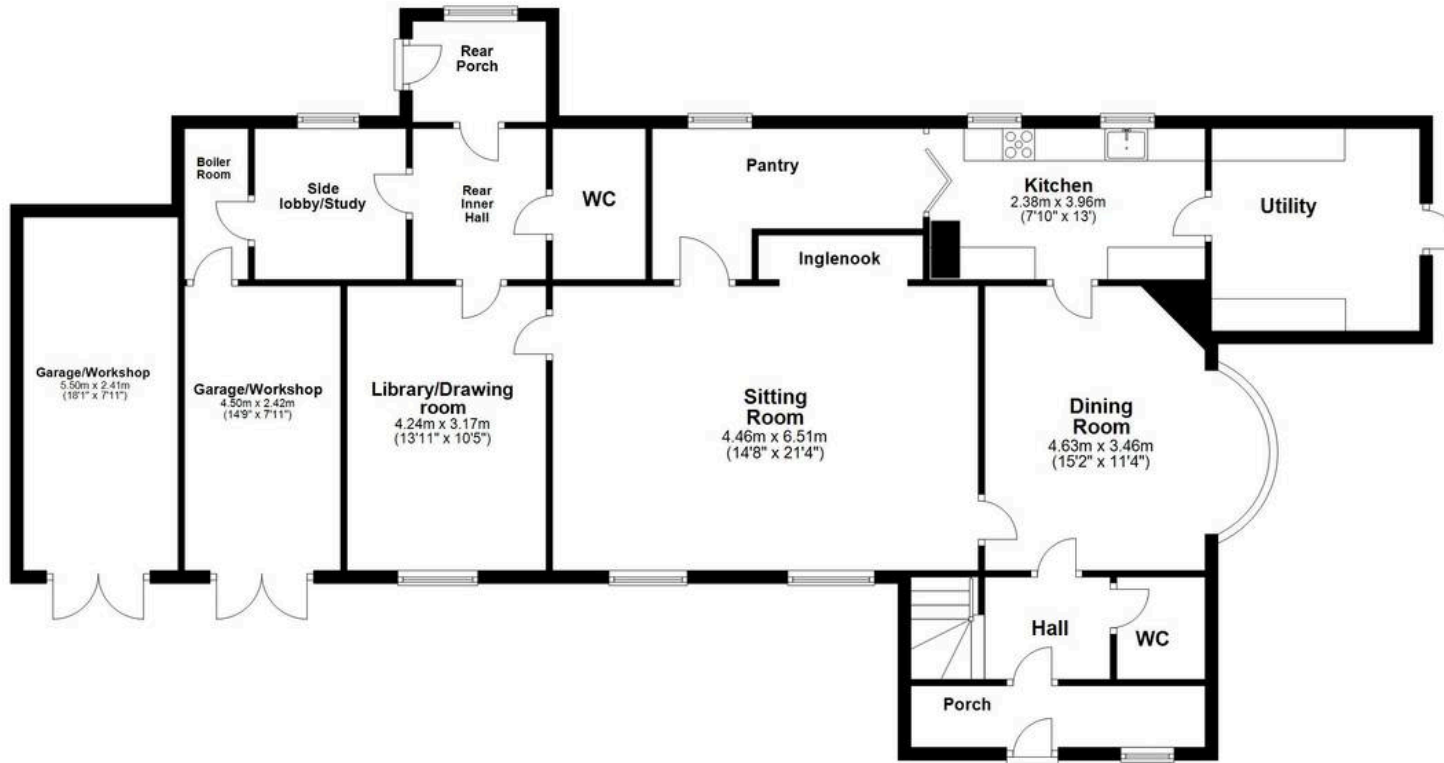








### Ground Floor



### First Floor

